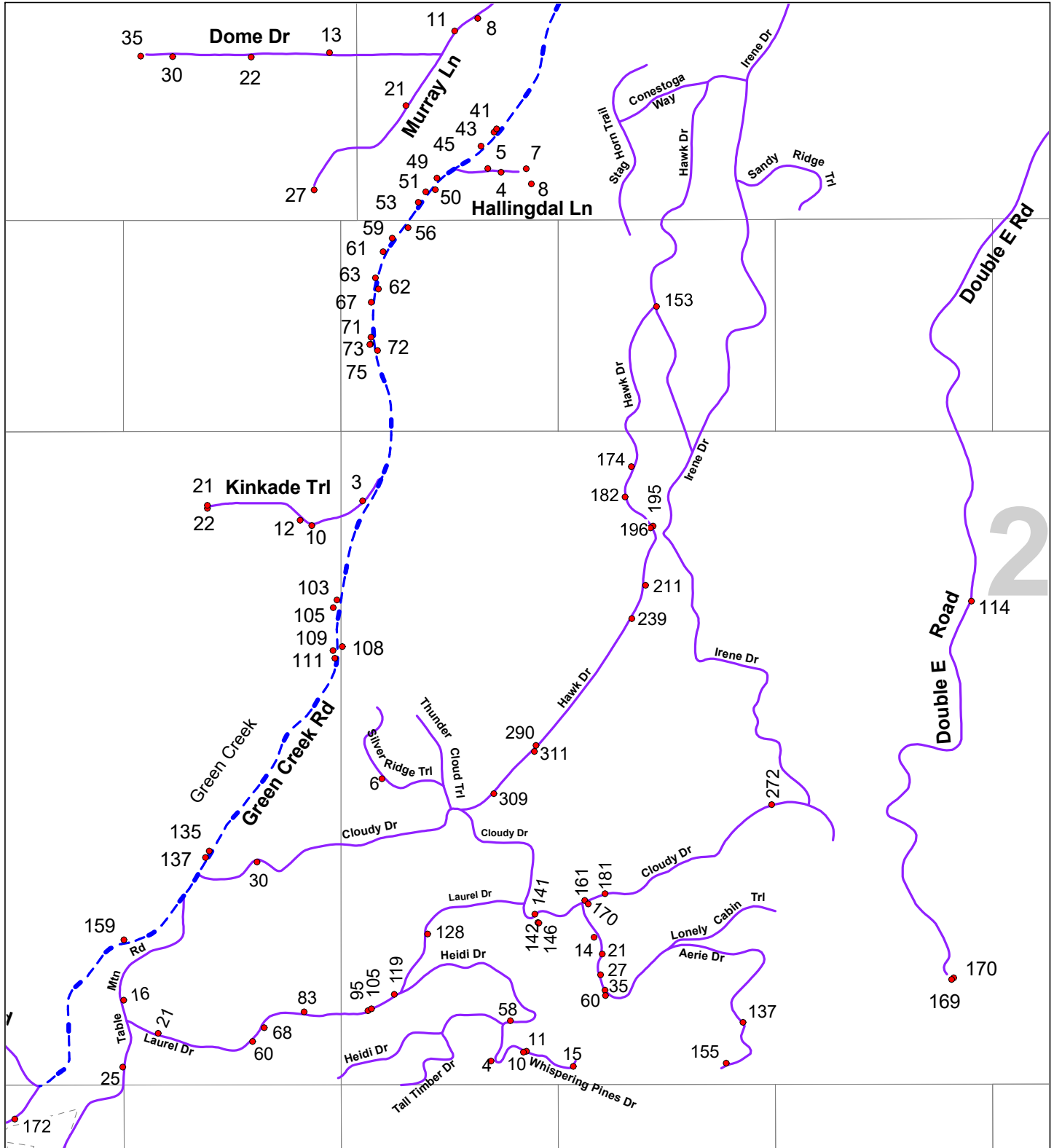


This map is for informational purposes only. The location and extent of roads, accesses, and property lines depicted hereon do not guarantee legal right of passage, ingress and egress, or property boundaries.

T52N R105W DETAIL C

52105C



- County Maintained
 - Chip Sealed
 - - - - - Dirt (various grades)
- State Maintained
 - Chip Sealed
 - Dirt (various grades)
 - Private Road
 - various surfaces



Cross Reference Road List:
Green Cr Rd = Rd 6DU